

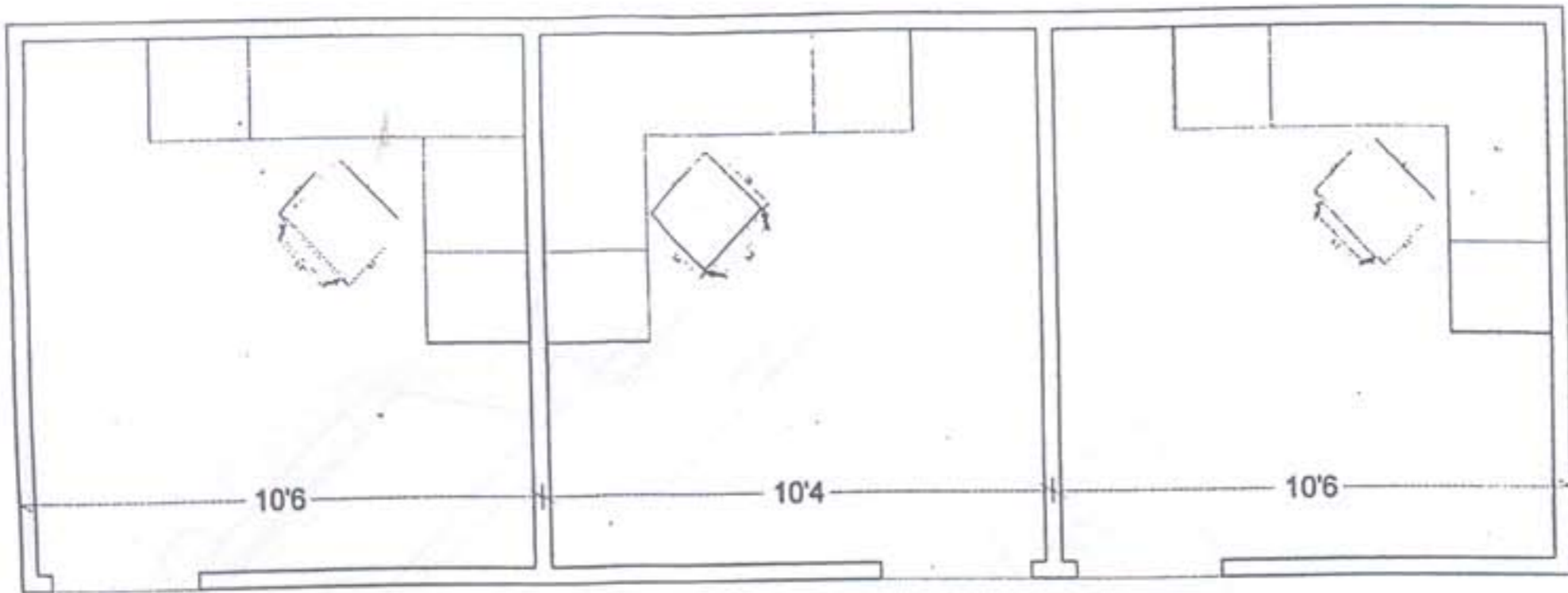
1. Specifications for Five Cubicles For Pro-tools Audio work station are given in table below. (3)
2. Technical tables Specification are same as before and orders has be repeated accordingly.

SOUND DEPTT.

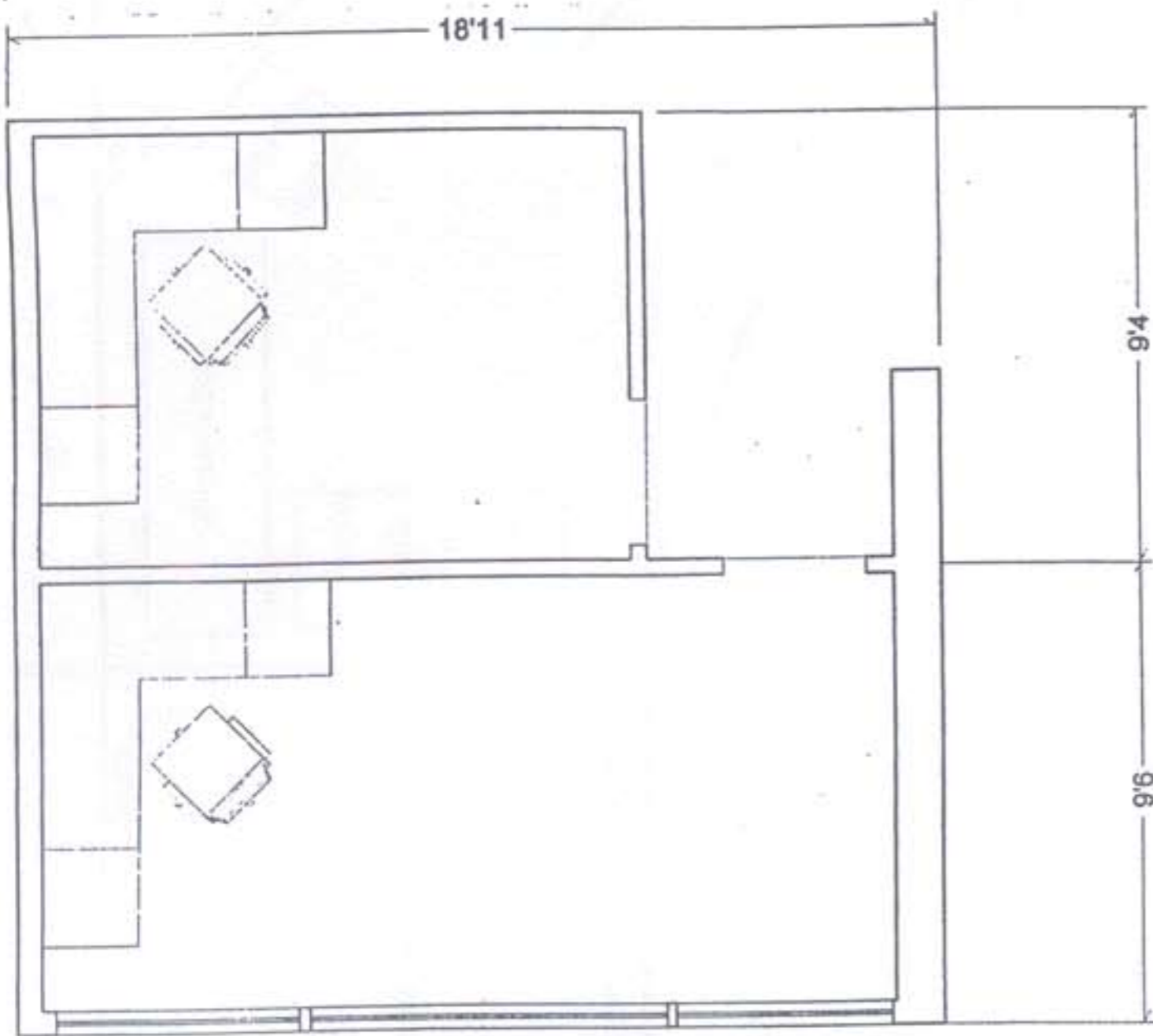
	Description	Qty	Per	Rates
1.	Painting Providing and applying Luster paint on walls. Providing and applying Polishing on the paneling	3000 sq ft 1000 sq ft	Sq.ft Sq.ft	
2.	Flooring Providing and fixing wooden floors	700 sq ft	Sq.ft	
3	Providing and fixing POP Flat false ceiling with spot lights	600 sq ft	Sq.ft	
4	Carpentry works Providing and fixing Glass doors with laminate finish including polishing, painting. Providing \ supplying chairs  Providing and fixing vertical blinds  All the carpentry works work including of Veneer &MDF Paneling in the sound proof room Including labour	5 Nos 10 Nos 200 sq ft Job	Sq.ft	
5	Electrical works (provisional cost including light fixers)	600 sq ft	Sq.ft	
6	Contingency miscellaneous-for partition & refixing			

7. Plus fee for design, details and supervision :

*(Signature)*  
K. S. Sarker



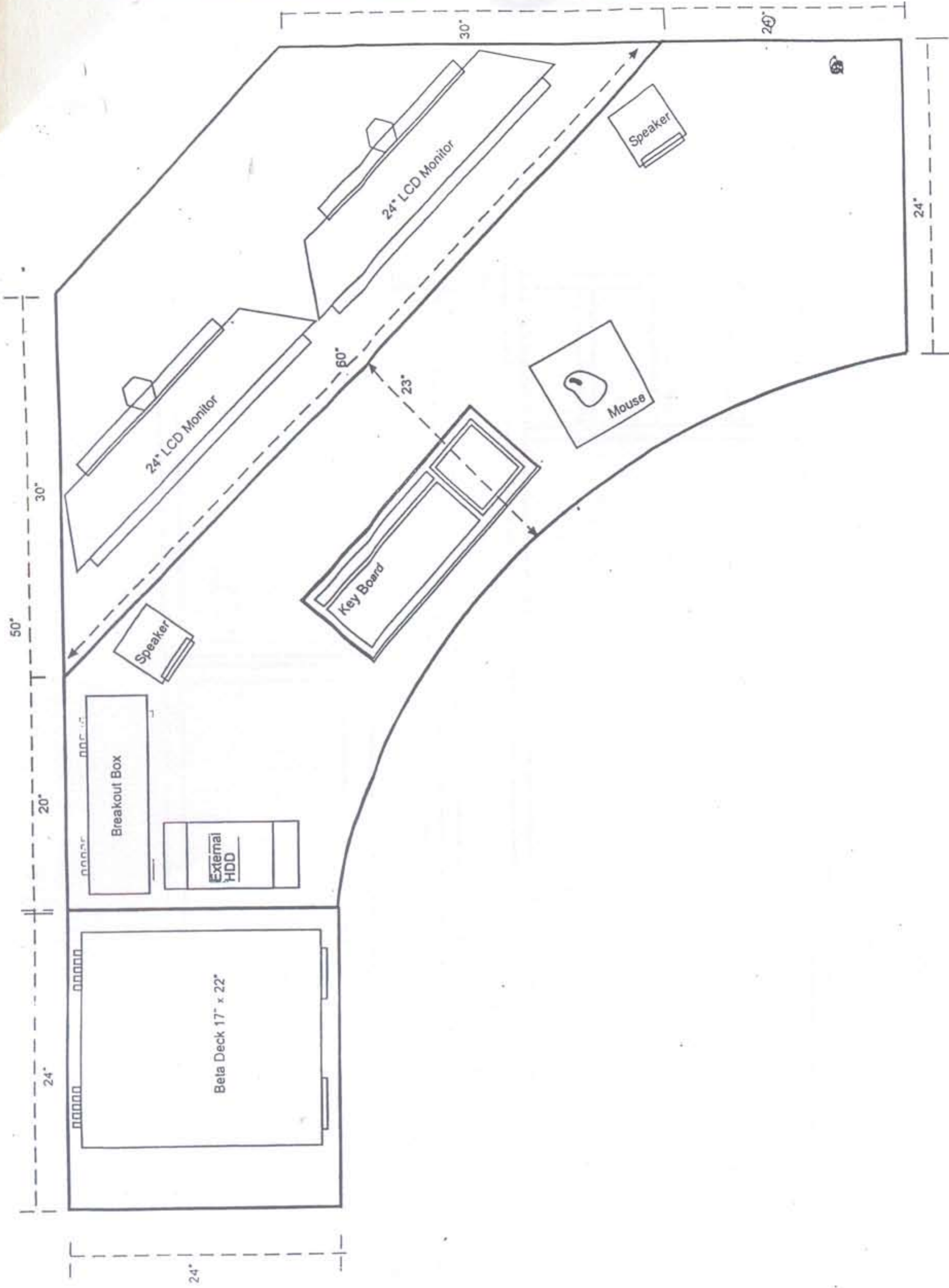
proposed for Protocols Audio Work Station of Sound Dept. (Films)



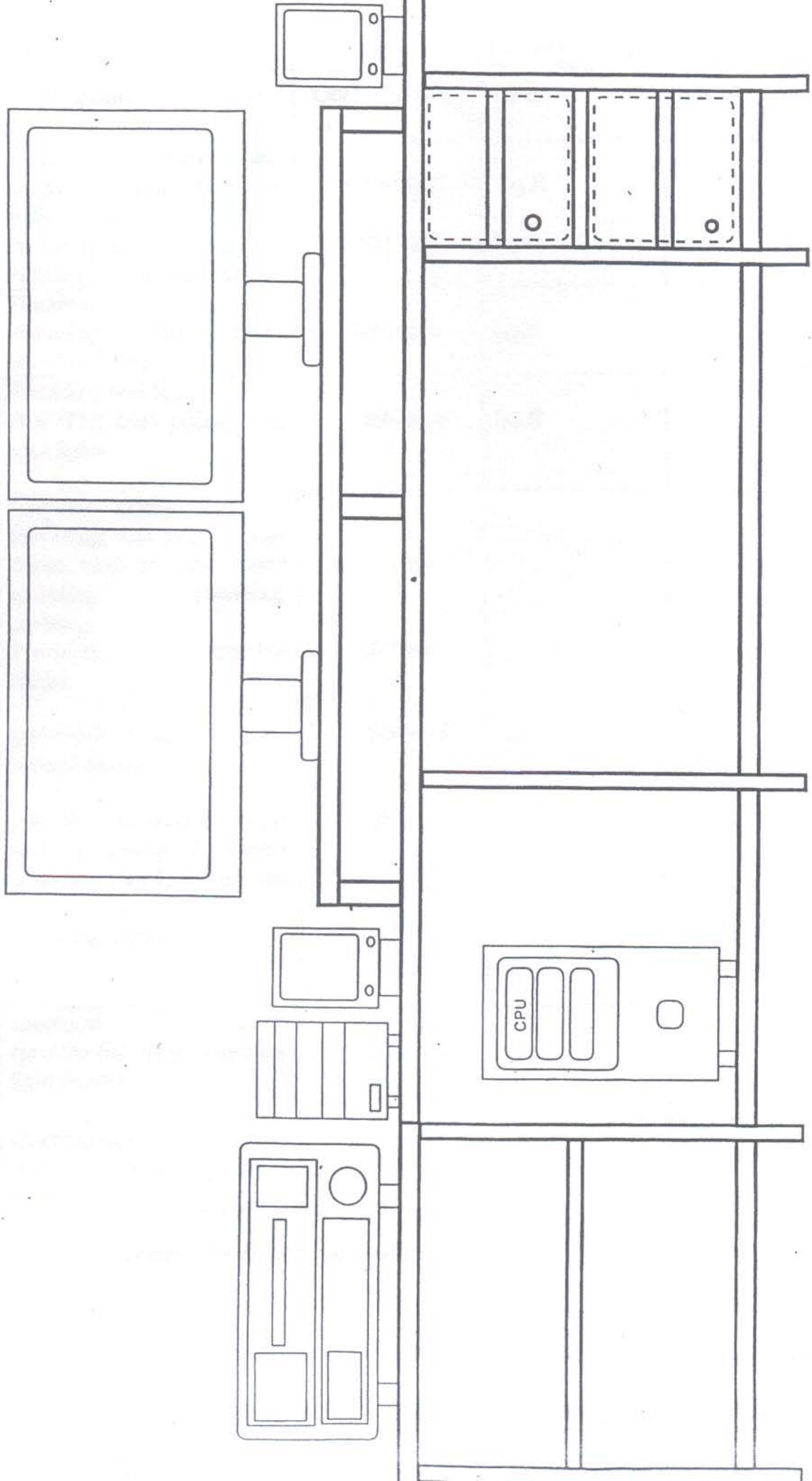
5 SOUND PROOF CUBICALS WITH DOORS, 5 TECHNICAL TABLES  
 10 CHAIRS, ELECTRICAL POINTS & SPLIT AIR CONDITIONERS 1.5  
 TON ITS PROPER INSTALLATION, LIGHT FIXTURES, PVC FLOORING,  
 FALLS ceiling, all the work quality has to be as has been done for  
 negative cutting room in editing dept.

The work need be  
 carried out on  
 Priority  
 (K. K. Sankar)  
 22.4.08

TOP VIEW



FRONT VIEW

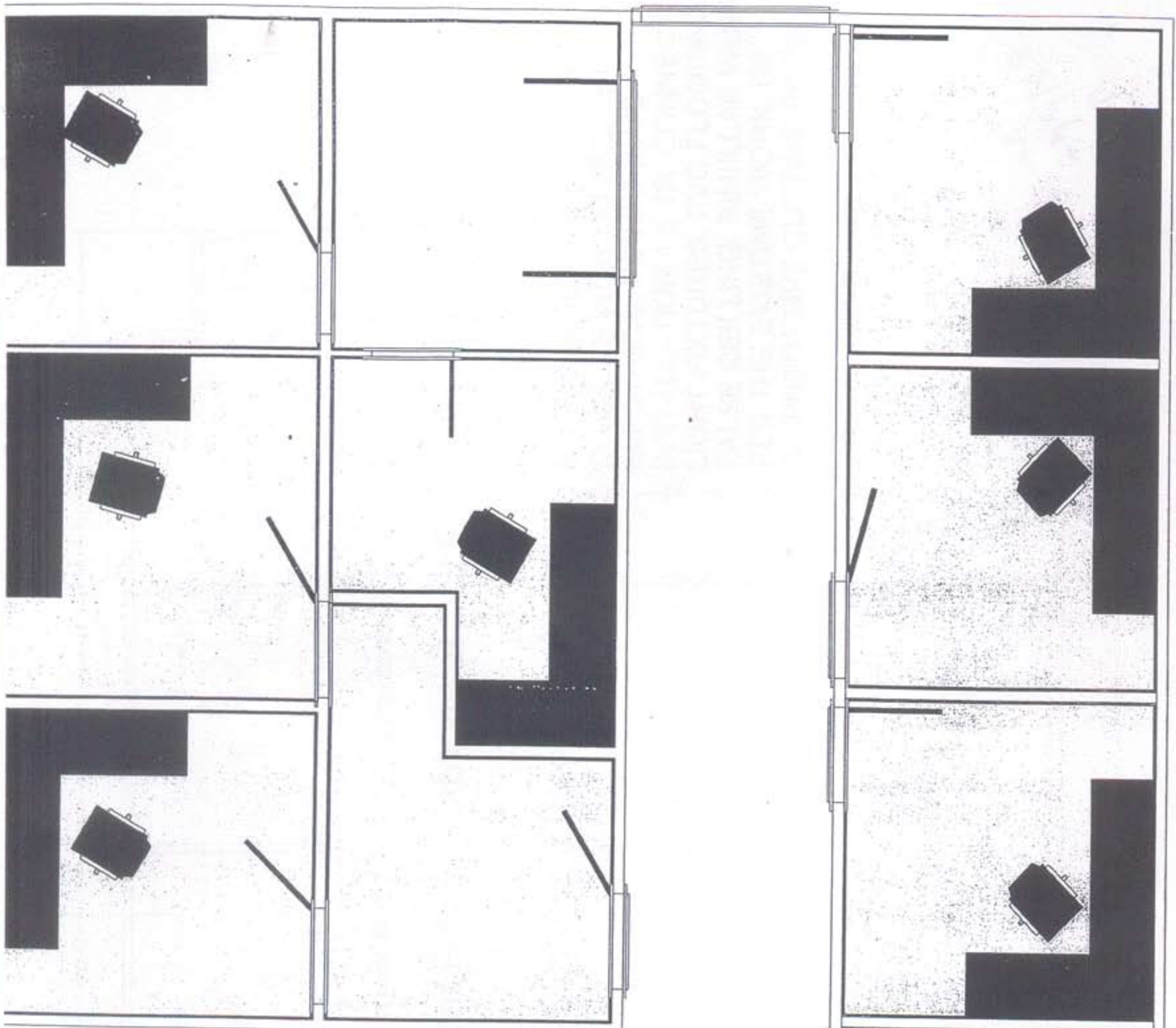


EDITING DEPT

	Description	Qty	Per	Rates
1.	Painting Providing and applying Luster paint on walls.	4,800	Sq.ft	
	Providing and applying Polishing on the paneling	900	Sq.ft	
2.	Flooring Providing and fixing wooden floors	1350	Sq.ft	
3	Providing and fixing POP Flat false ceiling with spot lights	1150	Sq.ft	
4	Carpentry works Providing and fixing Glass doors with laminate finish including polishing, painting.	11nos.		
	Providing \ supplying chairs	16nos.		
	Providing and fixing vertical blinds	100	Sq.ft	
	All the carpentry works work including of Veneer &MDF Paneling in the sound proof room Including labour	Job		
5	Electrical works (provisional cost including light fixers)	1150	Sq.ft	
6	Contingency miscellaneous-for partition & refixing			

Plus fee for Design, details and supervision  
Grand Total

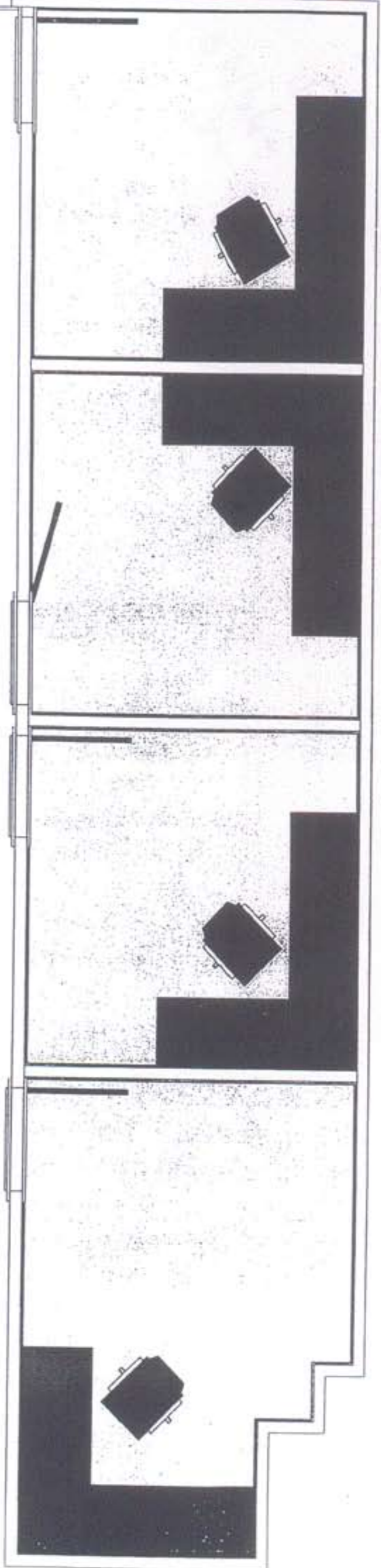
Rep of 30/4/09  
Hod, editing

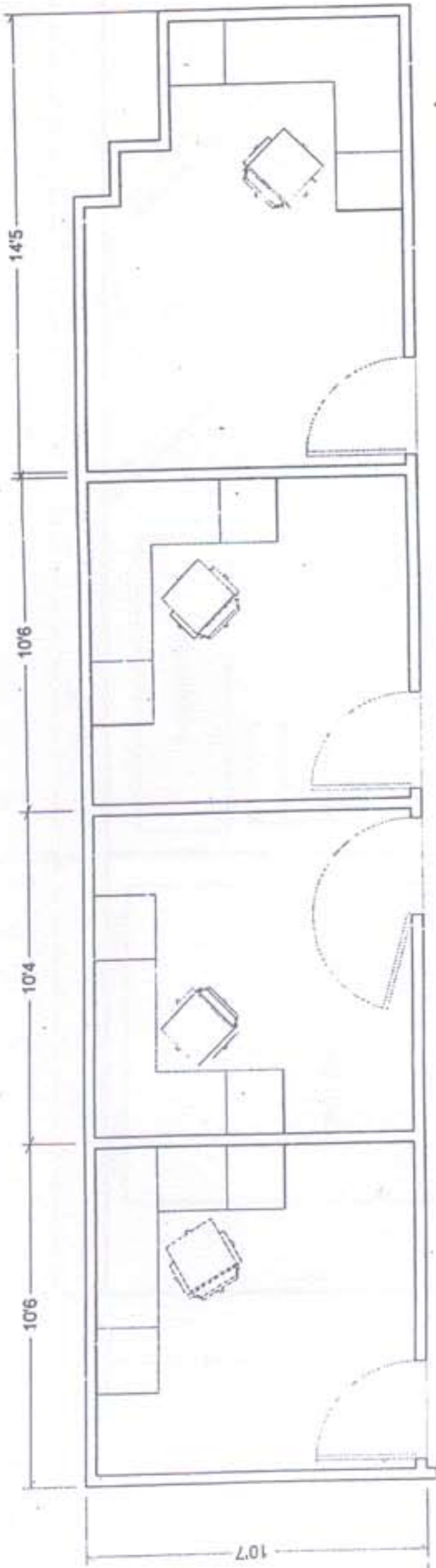


Editing Dept

Proposed Layout of 8 cubicles

*[Handwritten signature]*

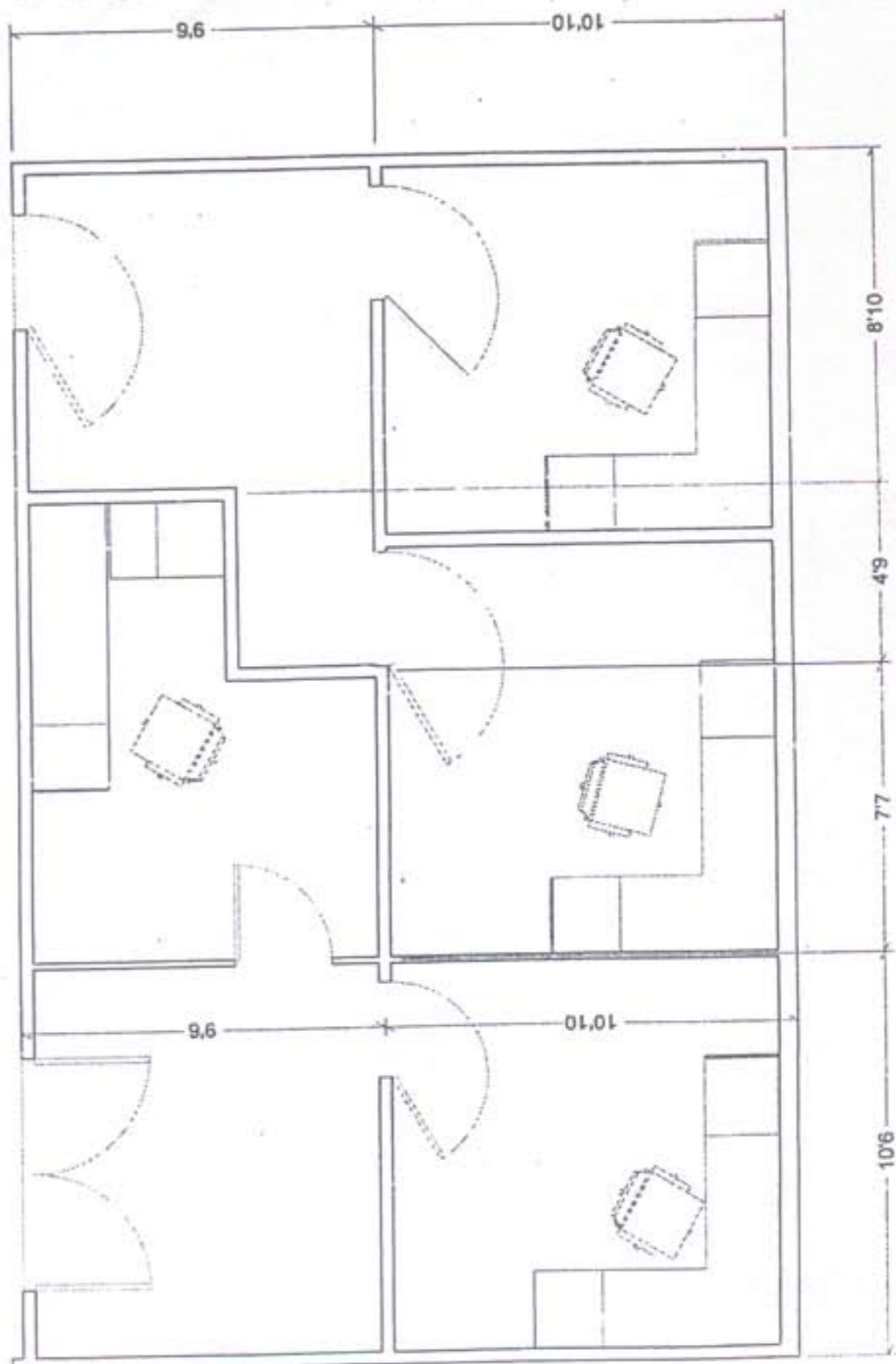




### Proposed Plan for Editing Cubicals at 2nd floor LAB BLDG.

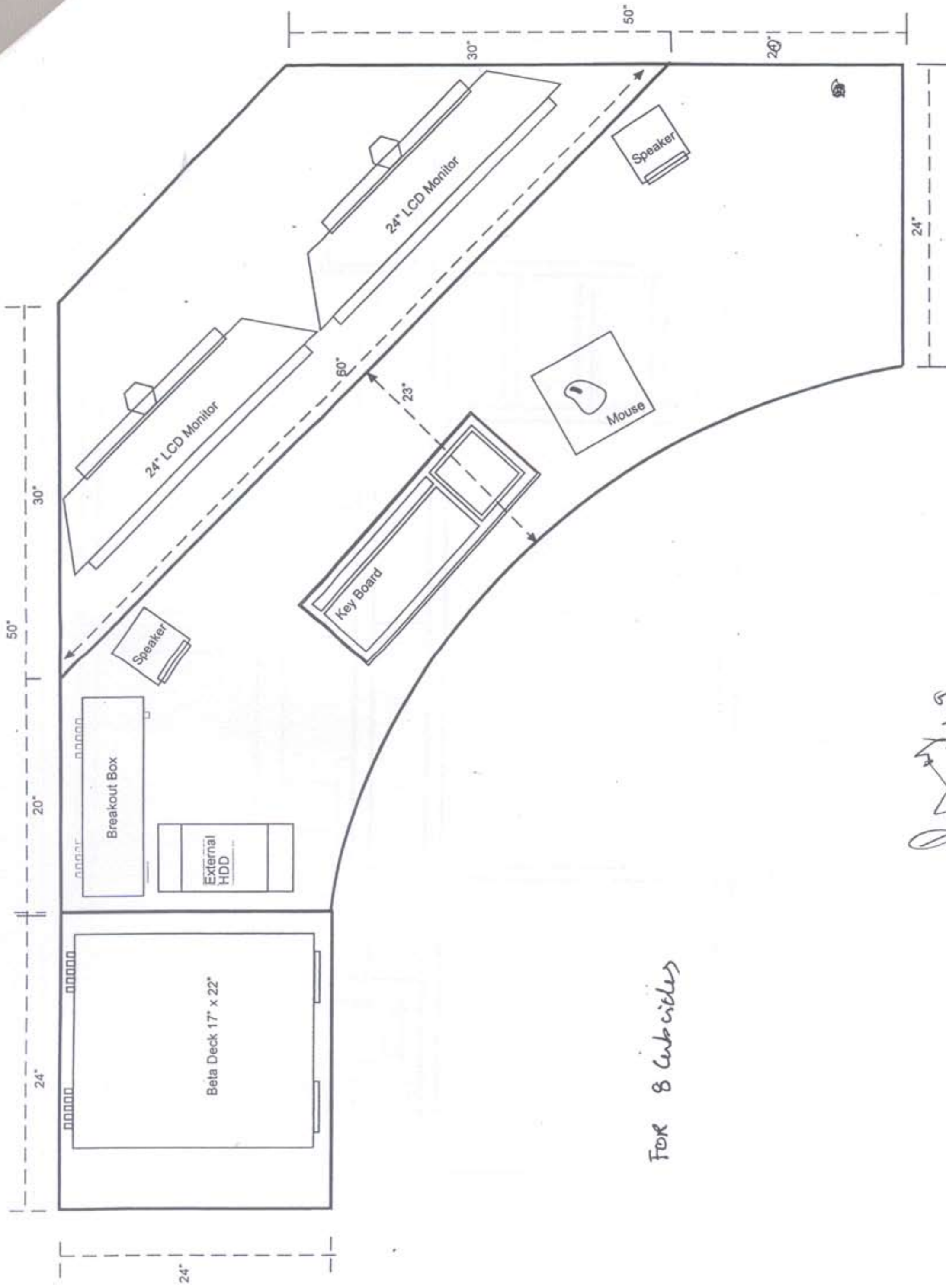
8, TECHNICAL TABLES, SOUND PROOF CUBICALS WITH DOORS, 16 CHAIRS, ELECTRICAL POINTS & A/C INSTALLATION 1.5 TR. CONNECTIONS & LIGHT FIXTURES, PVC FLOORING, FALSE CEILLING. SIMILLAR WORK AS PER THE EXISTING WORK. OF CRT/NEGATIVE CUTTING ROOM.

TOTAL AREA 1100 SFT



*Handwritten notes:*  
 22/11/08  
 3rd floor  
 12

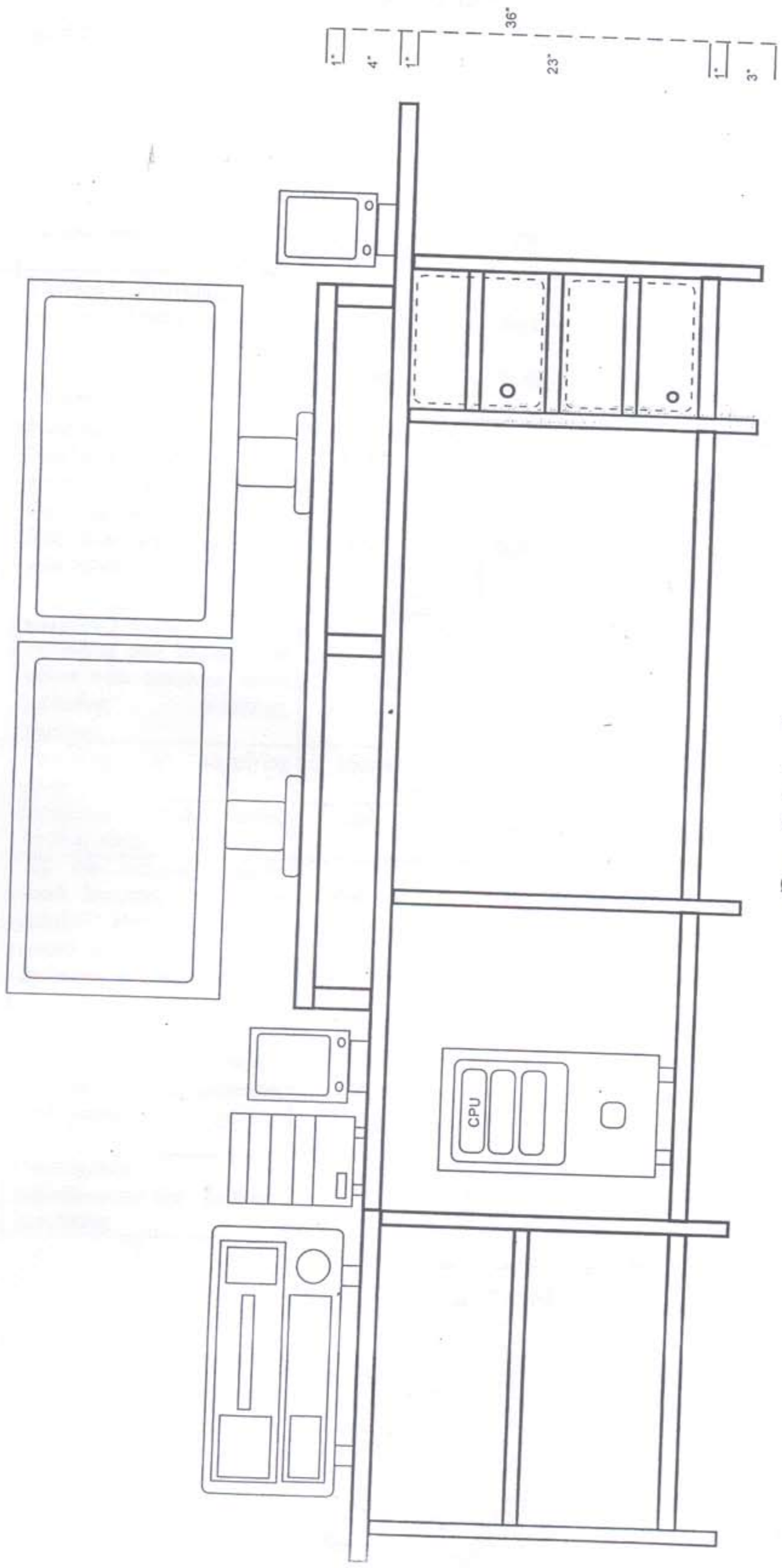
TOP VIEW



FOR 8 Cubicles

*Handwritten signature*  
10/14/2006

FRONT VIEW



For 8 cubicles

*Rev. 1/19/99*  
*For 8 cubicles*